

# AI That Understands Africa

**Inclusive. Intelligent.  
Impactful.**

# Unlocking the Power of AI for the Next **Billion Users**



# From Data to Agentic AI Innovations: A Complete Stack for Localized AI.



**Hyperlocal Data**



**Africa-Centric Models**



**Contextual AI Applications**

We collect the data! We train models! We build tools! We champion Africa's linguistic and cultural diversity.

EqualyzAI was founded to bridge the AI divide. While global AI models often overlook African languages and realities, we build systems that speak African language, understand African context, and solve African real-world problems.

We enable mission-driven organizations to enhance the reach and impact of their solutions by creating and delivering AI-driven applications that are accessible, relevant, and impactful for African communities. We do this by collecting hyperlocal multimodal data, training models on native languages and building agentic AI solutions grounded in context.



***AI can only be  
transformative  
when it understands  
the people it's  
meant to serve.***

# Built for Mission-Driven Organizations Across Africa



**Big Tech & AI Firms**



**Large Multinationals**



**Global Development Agencies,  
NGOs & Service Delivery Orgs**



**Schools & Ministries of Education**



**AI Researchers and Startups**



**Government & Policymakers**



**Human insight. Machine power.**  
**Hyperlocal data that matters.**

## Why it Matters

Billions of people are excluded from AI because their voices literally aren't in the training data. EqualyzCrowd closes that gap by ethically sourcing diverse, local data from communities across Africa.

- **Language Underrepresentation** – Models perform poorly due to lack of relevant data
- **Cultural Misalignment** – Lack of nuance or contextual understanding leads to irrelevant outputs
- **Poor Audio Quality or Labeling** – Many open datasets lack clean, verified, or regionally representative data
- **Dataset Inconsistency** – Combining crowd, open source, and synthetic data leads to misalignment
- **Internal Capacity Limitations** – Teams lack local partnerships or infrastructure to source the data needed
- **Lack of Data Diversity** – Teams lack the different dialects of various African languages.



## What we Do

Human-in-the-Loop as a Service (HITLaaS) offering that leverages our community of 10,000+ data contributors and expert linguists to provide high-quality datasets that are representative, inclusive, and contextually relevant to power AI model training.

- **Ethical Data Validation:** A qualitative data validation service that ensures your data is suitable for building nuanced models.
- **Audio Data Collection:** Collect speech and voice data in over 50 major languages across Africa, across multiple domains.



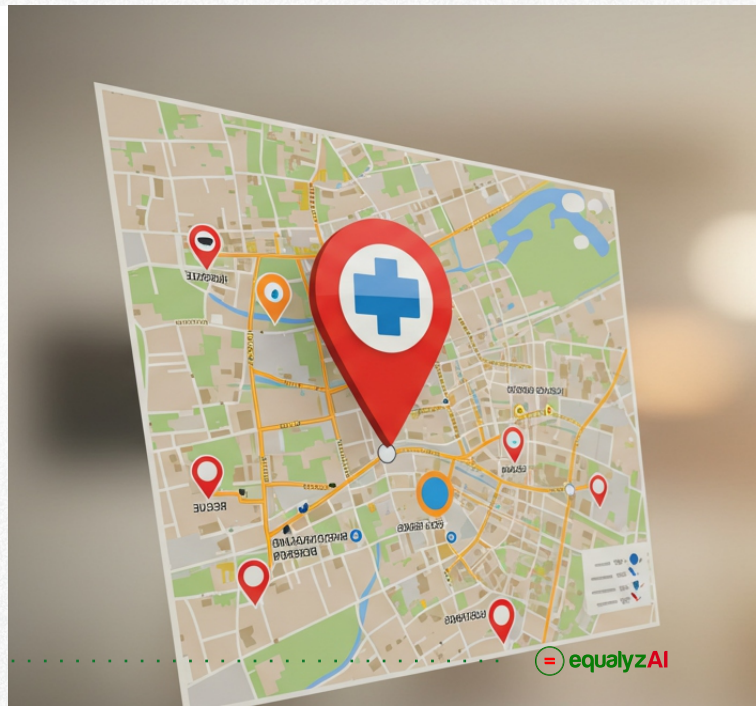
**Plan smarter.**  
**Reach farther. Save lives**

## Why it Matters

Vaccines don't help the child that doesn't get reached. Nanoplanner exists to ensure no person is left behind—not due to logistics, outdated maps, or missing data.

In a world where millions of children remain unreached due to poor planning, invisible settlements, or broken data systems, Nanoplanner is a response to a deep, urgent need: to find, reach, and protect every person who needs care. It was born out of the gaps witnessed during large-scale immunization efforts, where many populations are missed – not because vaccines didn't exist, but because they couldn't be reached in time or didn't even know where they were. Key problems such as;

- **Fragmented Systems** – Multiple tools, formats, and data sources that don't talk to each other
- **Reactive Planning** – Health worker routes, staffing, and supplies planned too late or manually
- **Last-Mile Blind Spots** – Poor visibility into what's happening in the field
- **Resource Wastage** – Over or under allocation of vaccines, nutrition kits, and personnel
- **Accountability & Reporting** – Difficulty producing timely, actionable reports for stakeholders





## What it Does

Nanoplanner is an AI-assisted microplanning platform for healthcare teams, designed to improve outreach, scheduling, and resource planning for maternal and child health services—especially in remote or underserved communities.

Our digital platform helps mission-driven healthcare organizations simplify planning, coordination and delivery of RMNCA-HN (Reproductive, Maternal, Newborn, Child and Adolescent Health and Nutrition) services, particularly in areas such as immunization, maternal and child health, and primary health care outreach.

It uses AI built for Africa's health systems, languages, and logistical realities to help:

- Access real-time and location-specific population denominators, Human Resource for Health data, facility lists, commodity and budget allocations.
- Correct and validate settlement boundaries and target population estimates.

- Plan, simulate, update outreach sessions, and plan supplementary interventions based on coverage data, terrain, and workforce availability.
- Deliver interactive planning guidance and resolve data ambiguities.

## How it Works

Nanoplanner combines several interconnected elements:

- **Multi-Platform Interface:** Available as a desktop, Android, and iOS application, designed for accessibility at the following administrative boundaries: national, State, LGA, Ward, settlement, and health facility levels
- **Integrated Data Modules:** Consolidates population data, human resources for Health, health facilities, and commodities into a single environment.
- **Validation Engine:** Uses historical coverage data trends and field corrections to update settlement boundaries and population estimates dynamically.
- **Agentic AI Layer:** A conversational agent that assists planners with real-time data interpretation, suggests planning improvements, and flags inconsistencies.
- **Feedback Loops:** User interactions help provide on-ground information and correct inaccuracies, making the platform smarter and more reliable over time.



## Turn your government and business documents into decisions.

### Why it Matters

Governments and businesses have vast volumes of complex data, but often lack the ability to easily understand it and use it to make informed decisions. Today AI models need to be able to bridge the gap between an organization's vast data volumes and its critical decision-making processes in order to truly enhance the productivity and effectiveness of users across governmental and business environments.

### What it Does

LLMiner is a versatile analytics and insights platform that leverages Large Language Models to parse, interpret, and extract actionable insights from extensive structured and unstructured datasets.

GovLLMiner is adept at analyzing policies, public records, legislation, citizen feedback, and administrative documents. It simplifies complex language, summarizes vast datasets, and identifies critical themes and trends vital for governance and policy formulation. BizLLMiner specializes in processing market reports, customer feedback, internal documentation, contracts, and competitor analysis. It generates precise summaries, identifies market trends, enhances customer relationship management (CRM), and provides strategic business insights essential for informed decision-making and innovation.



# LLMiner

## How it Works

LLMiner combines cutting-edge artificial intelligence, natural language processing (NLP), and data analytics through a streamlined interface that simplifies user interactions

- **Data Integration and Ingestion:** Capable of handling structured and unstructured data from various sources such as databases, cloud storage, CRM platforms, and document repositories.
- **Multimodal Language Model Core:** Utilizes state-of-the-art LLM architectures to comprehend, interpret, and analyze multimodal data and can be quickly optimized for specific terminologies, contexts, and challenges.
- **Analytical Engine:** Incorporates advanced NLP functionalities such as sentiment analysis, summarization, entity recognition, trend identification, and thematic clustering.
- **Interactive Dashboard and Reporting:** Provides intuitive, user-friendly dashboards and customizable reports to ensure stakeholders access insights in an understandable and actionable format.
- **Security and Compliance:** Can be deployed both online and offline, customizable to adhere to any stringent data privacy and security standards crucial for government and corporate usage.





## Language models that speak like your community does

### Why it Matters

Most LLMs fail in African languages—not because the languages are complex, but because the data to train them wasn't prioritized. AfroSLM flips the script by building powerful, small language models for African realities.

That means over 700 million people are being left behind in the AI revolution across the global south. As a result, farmers, traders, parents, and small business owners cannot access critical information in the languages they truly understand.

### What it Does

AfroSLM is a suite of multilingual Small Language Models optimized for African indigenous languages. It powers applications in finance, health, governance, and education—even on low-resource devices.

- Accurate interpretation and generation of text and voice in multiple local languages.
- Delivery of financial education, health information, and service guidance directly in native languages.
- Lightweight deployment that can run on limited infrastructure, making it feasible for organizations in regions with constrained compute resources.





## How it Works

- **Domain-Specific Small Language Models:** Each model is trained on curated datasets specific to financial services, health, and other verticals, ensuring contextual accuracy.
- **Optimized Architecture:** Built to be lightweight, enabling deployment even on smaller servers or edge devices without massive compute infrastructure.
- **Multilingual Training Data:** Incorporates diverse, indigenous African language datasets to deliver superior performance and comprehension.
- **Voice and Text Interfaces:** Supports both written and spoken interactions, allowing users with low literacy levels to benefit through voice prompts and responses.
- **Continuous Learning Loops:** Field feedback and real-world usage data improve model accuracy and relevance over time.





## AI for Teachers. Tailored Learning for Every Student.

### Why it Matters

In many under-resourced classrooms, especially across Africa, teachers face overwhelming pressure to deliver quality education within limited time and with limited tools. Every day they carry the weight of planning, delivering, and writing lesson plans with little support.

Challenges such as;

- **Teacher Capacity** - Overloaded teachers with limited time and access to resources
- **Curriculum Localization** - Existing edtech tools are not aligned with local curricula, languages, or teaching styles
- **Equity of Access** - Lack of digital infrastructure and content in underserved schools and regions
- **Monitoring & Measurement** - Difficulty tracking real-time impact or tailoring instruction to individual learners
- **Scalability & Sustainability** - Haven't been able to successfully scale programs; large-scale initiatives lack adaptable, local-fit tools





## What it Does

uLearn is a one-stop hub for lesson creation, learning engagement, and educational insight. The AI-powered educational platform is designed for teachers and students in primary and secondary schools and uses Large Language Models (LLMs) to help teachers:

- Instantly generate lesson plans, lesson notes, quizzes, worksheets, report card comments, and other classroom content tailored to curriculum standards and student learning styles.
- Create virtual learning rooms where students engage with AI-generated flashcards and chat-based quizzes personalized to their academic needs.
- Access tools for communication (letter writing, newsletter generation), visual learning (image generation, chart tools), and student engagement (ice breakers, social stories, real-world examples).

### For students, uLearn provides:

- A personalised learning dashboard with access to virtual room activities, flashcards, quizzes, and performance tracking.
- Engagement tools like leaderboards and badges

### Admins use uLearn to:

- Manage schools and classes.
- Assign teachers.
- Monitor usage and performance across the system

## How it Works

### AI-Powered Content Engine

Generates curriculum-aligned lesson plans, assessments, and activities based on teacher inputs—customized to learning styles like visual, auditory, and kinesthetic.

### Role-Based Dashboards

Simple, modular interfaces for teachers, students, and admins with content tools, analytics, and progress tracking.

### Virtual Learning Rooms

Teachers create subject-specific rooms with flashcards or chat-based quizzes. Students engage in gamified, personalized activities.

### Performance Insights

Tracks quiz scores, engagement, and progress to help tailor instruction and close learning gaps.

### Accessible & Secure

Works on desktop and mobile, even in low-resource settings. Supports OTP/Google login with strong privacy controls.



Every call is a conversation  
that could **save a life.**

## Why it Matters

In mission-driven call centers—like those for family planning or vaccine awareness—what's said and how it's said matters. But the information and nuances of these conversations are difficult to capture and often fail to be recognized as insights to improve care.

## What it Does

Audio Miner turns everyday conversations into data that drives smarter, more compassionate care. Its intelligent call analytics and quality assurance platform transforms voice conversations into actionable insights.

It enables organizations to:

- Evaluate every interaction for quality, compassion, and completeness
- Track product or service mentions, client concerns, and emotional cues
- Visualize trends in engagement, performance, and client needs



- Identify training gaps and monitor real-time compliance
- Power decision-making with data derived directly from frontline communication

In short, Audio Miner turns conversations into care metrics, and care metrics into strategy.



## How it Works

**Voice-to-Insight Pipeline:** Audio Miner transcribes and analyzes voice calls using advanced AI

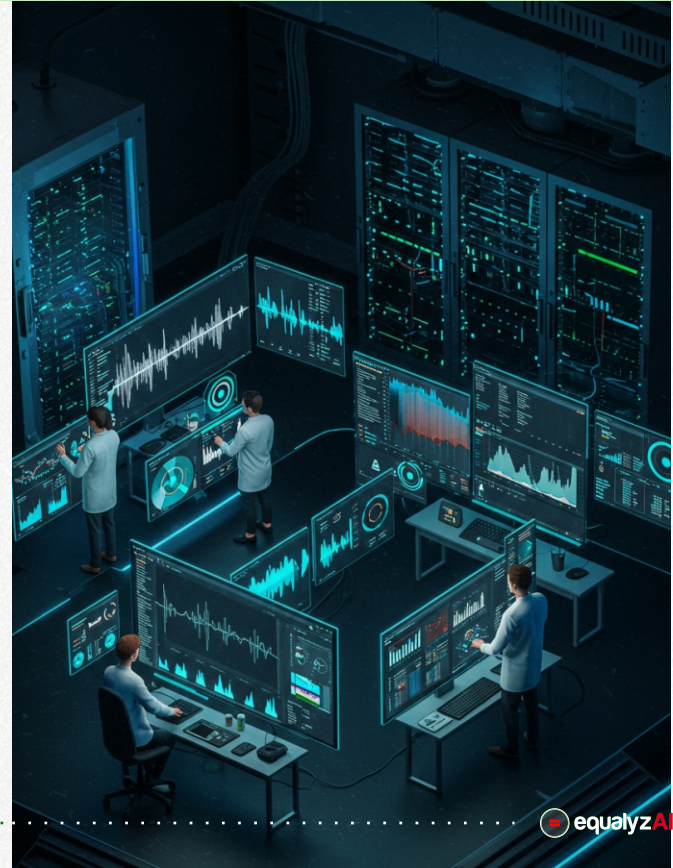
- Speaker Separation & Tagging for agent vs. client roles
- Accurate Transcriptions via Whisper (even in noisy settings)
- Speaker Tracking across conversations with SpeechBrain

**Smart Conversation Analysis:** Calls are scored for empathy, completeness, and clarity using care-quality frameworks

- Detects product mentions, emotional cues, and unresolved issues
- Flags gaps in communication and service delivery

**Real-Time Dashboards:** Supervisors and teams get:

- Compliance scores and engagement trends
- Emotional sentiment tracking
- Training recommendations and QA alerts





**Dr. Olubayo  
Adekanmbi**  
CEO/Co-Founder

Olubayo has 23 years of experience as a C-level technical and business leader. He has led high-impact innovations, transformational strategies, and data science and analytics projects for Africa's two largest telecommunication companies – MTN and Airtel African UK Limited—with oversight functions covering over 300 million customers in 30 countries.

Olubayo is also an award-winning solution developer who has led the development of globally acclaimed solutions for the Bill and Melinda Gates Foundation, the Mastercard Foundation, Meta, the World Bank, and others.

Five of the products Olubayo has led have been listed on the IRCAI/UNESCO Top 100 AI products for sustainable development. He also recently won the Global Grand Challenge on building LLMs for social good.

Olubayo also served in global initiatives, such as the AI Safety and Ethics (UK AI Safety Institute), National AI Policy Development (Government of Nigeria, Tony Blair Institute), AI for Humanitarian Intervention (e.g. UK Humanitarian Innovation Hub), AI for development (e.g. The GSM Association – GSMA), AI capacity development (Google, Microsoft, Meta, Nvidia), AI Social good platforms (e.g. Bill and Melinda Gates Foundation, Mastercard Foundation) and AI Governance Framework Development (e.g. Lagos State Government). Olubayo has a PhD from the University of London (St George/City)



**Dr. Ife  
Adebara**  
CTO/Co-Founder

Ife is a globally recognized researcher with over seven years of experience in natural language processing, linguistics, and language policy.

She has served as a member of the Deep Learning and Natural Language Processing Group at University of British Columbia (UBC) and as an associate member of the African Languages Technology Initiative in Nigeria. Ife has also presented her research work at top NLP conferences, including ACL, EMNLP, COLING, and the LT4ALL conference organized by UNESCO.

Her work has also been recognized beyond the academic sphere, including media coverage by CBC News, Global News Canada, AMD, and City News Vancouver.

Ife also won the Top 10 Outstanding Global AI Solutions Award from the IRCAI under the auspices of UNESCO for AfrolID and Serengeti—a language identification model and natural language understanding model for 517 African languages.

Ife's PhD is from UBC Canada. Her dissertation focussed on the development of deep learning technologies for 517 African Languages and endeavored to make “computers usable in African languages.”

## Global Credibility

Recognition from the Gates Foundation, UNESCO, and MIT Tech Review puts us on par with top-tier global AI innovators.

## Ethical Roots

From hyperlocal data practices to community-led model building, our work centers consent, compensation, and cultural accuracy.

## Thought Leadership

Academic and AI circles worldwide increasingly view EqualyzAI as a leader in ethical, inclusive, and low-resource language technology



***AI must speak  
our languages  
to serve our  
communities.***

### Mid-2025

Published  
foundational white  
paper



### Early 2025

Major tech and media  
features



### 2023

Gates Foundation  
Grand Challenge  
Award



# Let's Build AI That Belongs

## US Office:

EqualyzAI Inc.  
2001 L Street N.W.  
Washington DC 20036

📞 202 8975 477

## Nigerian Office:

33, Queens Street,  
Herbert Macaulay Way,  
Yaba, Lagos, Nigeria.

📞 +234 906 200 0127

🌐 [www.equalyz.ai](http://www.equalyz.ai)

✉ [support@equalyz.ai](mailto:support@equalyz.ai)

📷 [equalyz\\_ai](https://www.instagram.com/equalyz_ai)

🌐 [equalyzai](https://www.linkedin.com/company/equalyzai)